



# The South Bay

HUGHES ROAD

By MESAON Group & Triumph Realty

## The Premiere Suites

4BHK DUPLEX. 9TH TO 20TH FLOOR. 2207 SQ FT. CARPET AREA

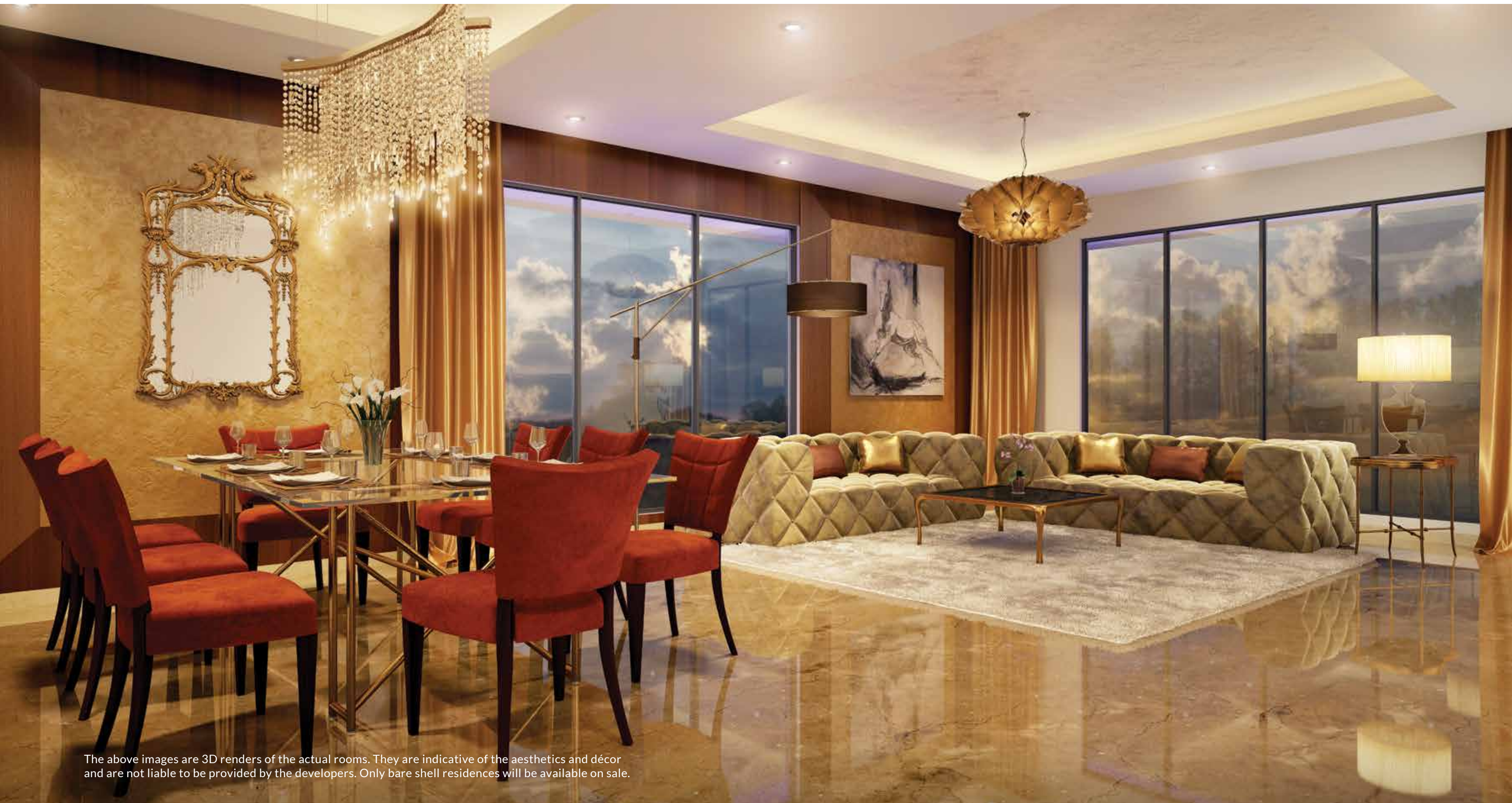
22 STORIES. 16 RESIDENTIAL LEVELS. 11 APARTMENTS. 1 EXCLUSIVE ADDRESS.



# The Premiere Suites

These luxurious 4 bedroom duplex apartments are spread across 2207 sq ft. carpet area. Each of them offer a beautiful view of the Queen's Necklace, the lush green Hanging Gardens, the Babulnath Mandir and the old world Parsi colony. These suites offer a large living area coupled with a dining space besides a large kitchen, a puja room, powder bath, utility space and luxurious bedrooms at the lower level. Each of these Suites come with a personal home elevator connecting the lower level to the upper. The specially designed master bedroom at the upper level offers complete privacy and a picturesque view of the Arabian Sea. The master bedrooms are incredibly grand and cover a carpet area of approx. 645 sq ft. True to its name the expanse of the room offers space for a super king sized bed attached with a very beautiful walk in wardrobe. The jacuzzi by the window epitomizes luxury to its fullest. These duplexes are alternatively spread out over levels 9 to 20. Residents of these suites also have the entire lift lobby space available to themselves.

## The Living Room 515 Sq Ft.



The above images are 3D renders of the actual rooms. They are indicative of the aesthetics and décor and are not liable to be provided by the developers. Only bare shell residences will be available on sale.



# The Master Bedroom 645 Sq Ft.



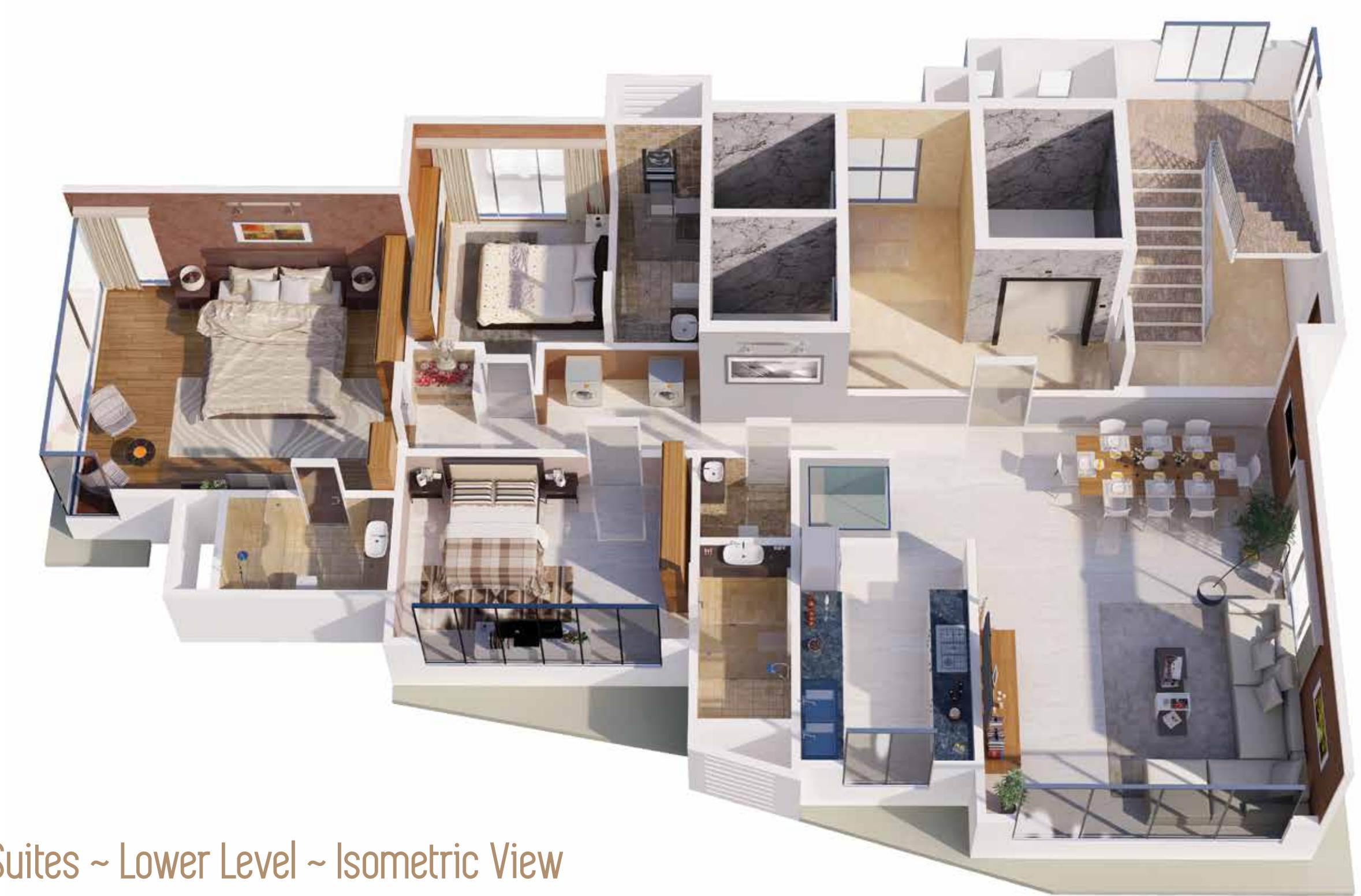
The above images are 3D renders of the actual rooms. They are indicative of the aesthetics and décor that will be provided by the developers. Only bare shell residences will be available on sale.



## The Premiere Suites ~ Lower Level ~ Floor Plan

The furniture shown in the layout is only indicative. Only bare shell residences will be available on sale.





## The Premiere Suites ~ Lower Level ~ Isometric View

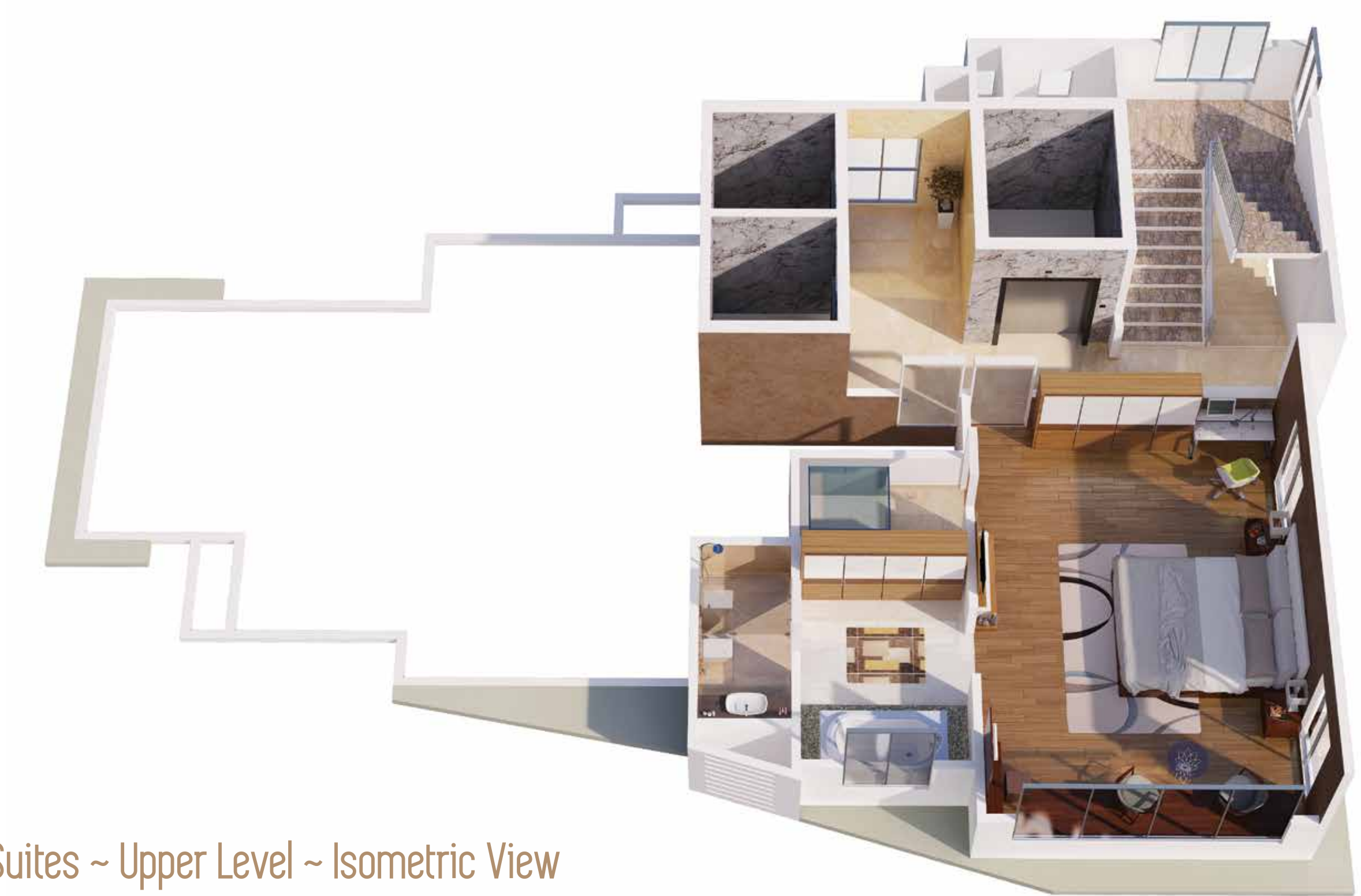
The furniture shown in the layout is only indicative. Only bare shell residences will be available on sale.



## The Premiere Suites ~ Upper Level ~ Floor Plan

The furniture shown in the layout is only indicative. Only bare shell residences will be available on sale.





## The Premiere Suites ~ Upper Level ~ Isometric View

The furniture shown in the layout is only indicative. Only bare shell residences will be available on sale.



The pictures of the views are taken from a building across the road. These are indicative of the general view, and may vary from the views from each floor of The South Bay.







MAHARERA Registration No. P51900002722  
Also available at website : [maharera.mahaonline.gov.in](http://maharera.mahaonline.gov.in)



BUILDING TRUST  
**MESACON**  
GROUP

**TRIUMPH**  
REALTY

The South Bay, 31, Hughes Road, Mumbai 400 007  
[www.thesouthbay.in](http://www.thesouthbay.in) | +91 70 4512 1282

Disclaimer: The images, perspectives, elevations & specifications contained in this brochure are only indicative. The room dimensions in meters are as per approved plans, the dimensions in feet have been rounded off to the closest inch. The Proposed development and building are subject to approval from the respective Authorities. The Developers reserve the right to make changes or alteration to the design of the flats, building, perspectives, elevations, and specifications at their sole discretion without any prior notice.